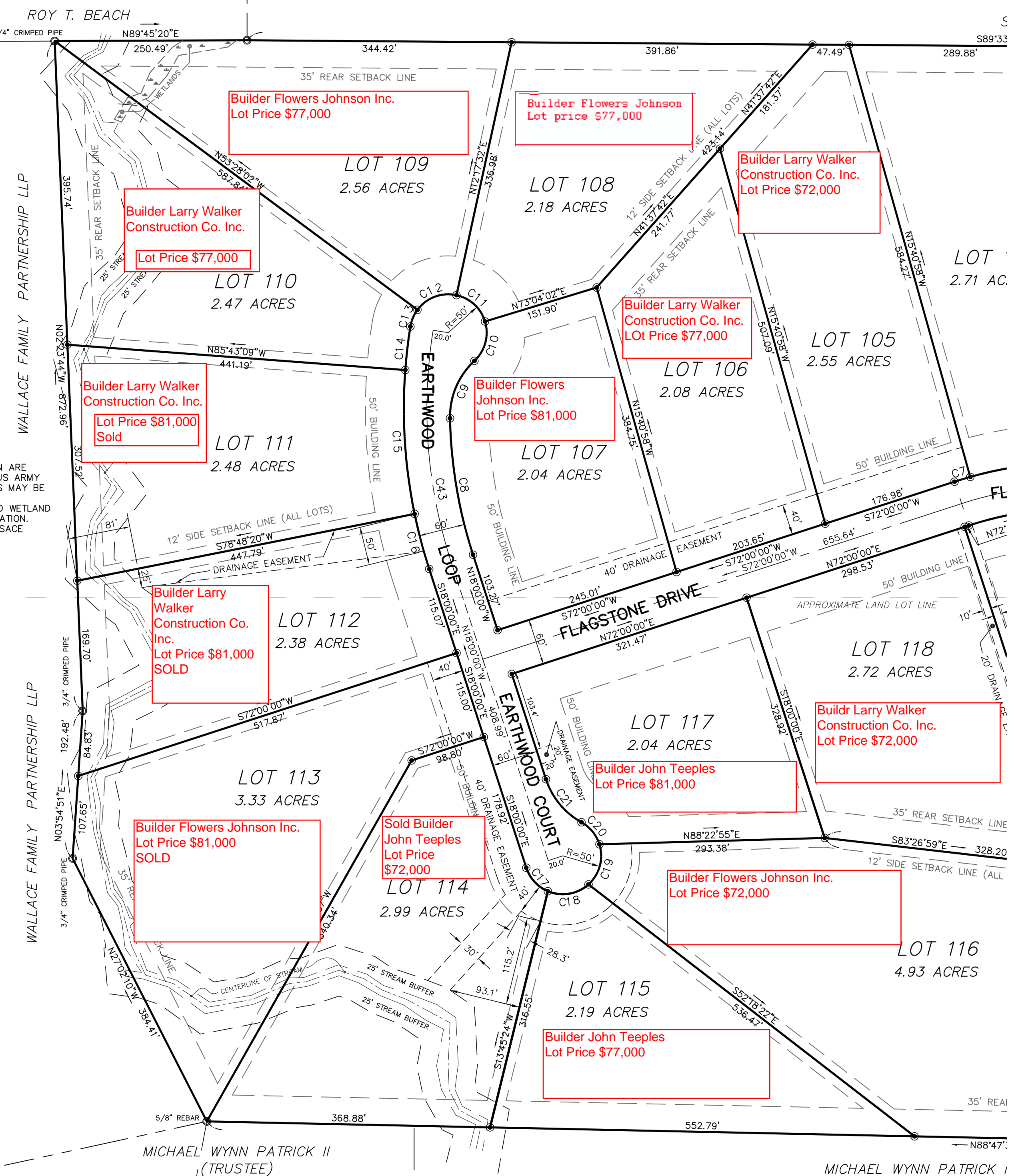
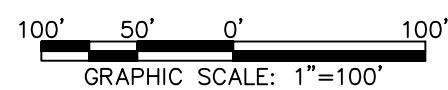


NOTES:
 1. WETLANDS SHOWN ON THIS PLAN ARE UNDER THE JURISDICTION OF THE US ARMY CORPS OF ENGINEERS. LOT OWNERS MAY BE SUBJECT TO PENALTY BY LAW FOR DISTURBANCE TO THESE PROTECTED WETLAND AREAS WITHOUT PROPER AUTHORIZATION.
 2. WETLANDS IDENTIFIED AS PER USACE Y-87=1 TECHNICAL MANUAL

THE ORIGINAL OF THIS DOCUMENT WAS SEALED AND SIGNED BY RICKY L. TAYLOR GEORGIA REGISTERED LAND SURVEYOR NO. 2600 ON JANUARY 30, 2008

THIS REPRODUCTION IS NOT A CERTIFIED DOCUMENT



WALLACE FAMILY PARTNERSHIP LLP

WALLACE FAMILY PARTNERSHIP LLP


MICHAEL WYNN PATRICK II (TRUSTEE)

MICHAEL WYNN PATRICK I

SHEET 3 OF 5

NO.	REVISION DESCRIPTION	BY	DATE

EMC ENGINEERING SERVICES, INC.



ENVIRONMENTAL • MARINE • CIVIL • SURVEYING REGIONAL OFFICE
 3575 MACON ROAD, SUITE 15 ALBANY, GEORGIA 31707
 COLUMBUS, GEORGIA 31907 (706) 565-5985
 columbus@emc-eng.com www.emc-eng.com

FINAL PLAT
 SECTION TWO
HARRIS WOODS
 LYING IN LAND LOTS 172 & 183
 19th LAND DISTRICT
 HARRIS COUNTY, GEORGIA

PROJECT NO.:	06-7052
DRAWN BY:	DCA,RLT
DESIGNED BY:	
SURVEYED BY:	DCA, RLT
CHECKED BY:	RLT
SCALE:	1" = 100'
DATE:	01/30/2008

SHEET
4
 OF 5