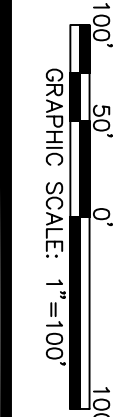
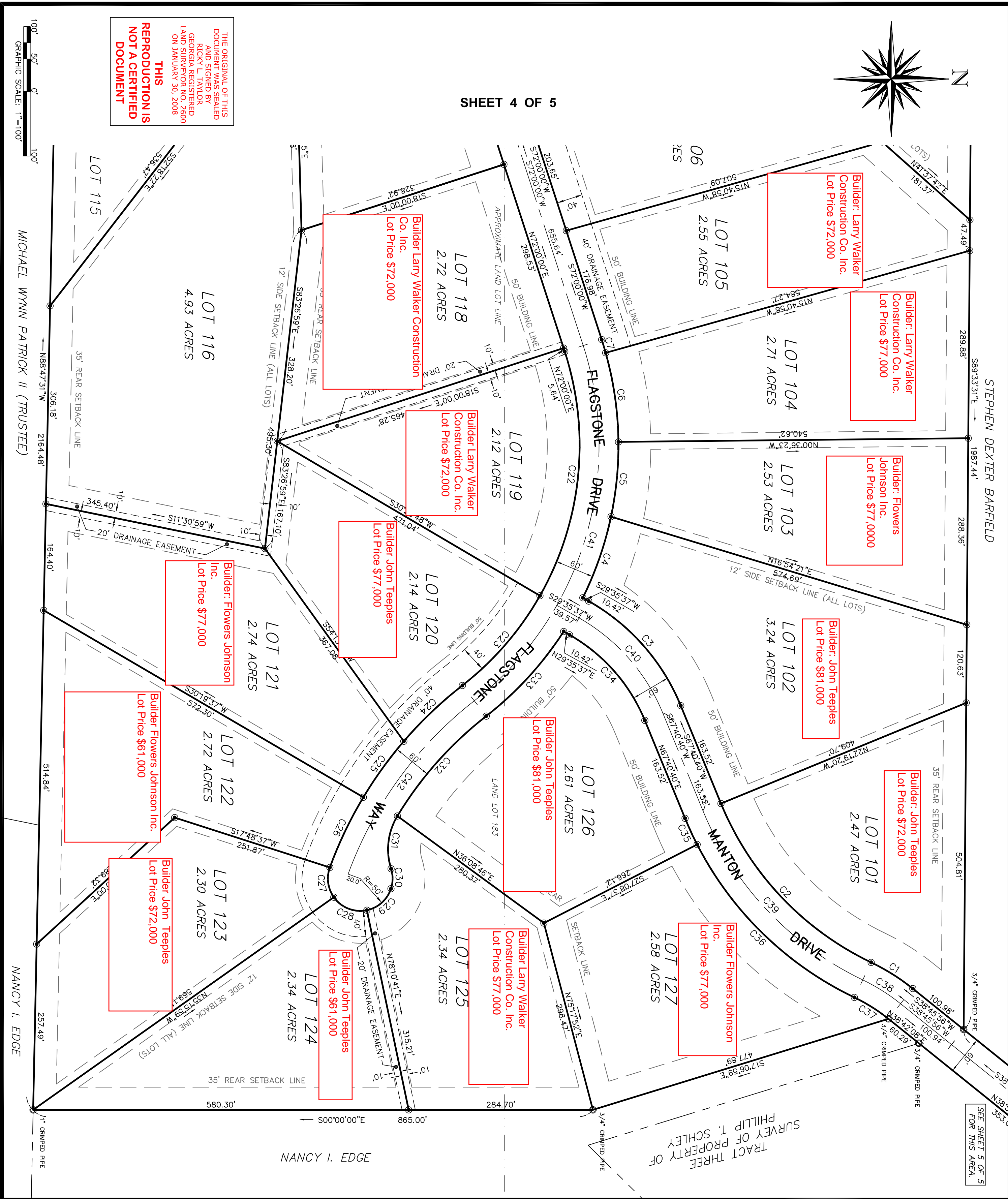


SHEET 4 OF 5

THE ORIGINAL OF THIS DOCUMENT WAS SEALED AND SIGNED BY A PROFESSIONAL SURVEYOR AND REGISTERED LAND SURVEYOR NO. 2600 ON JANUARY 30, 2008

THIS REPRODUCTION IS NOT A CERTIFIED DOCUMENT



MICHAEL WYNN PATRICK II (TRUSTEE)

NANCY I. EDGE

TRACT THREE
SURVEY OF PROPERTY OF
PHILLIP T. SCHLEY

SEE SHEET 5 OF 5
FOR THIS AREA.

NO.	REVISION DESCRIPTION	BY	DATE

PROJECT NO.:	06-7052
DRAWN BY:	DCARLT
DESIGNED BY:	DCARLT
SURVEYED BY:	DCA, PDP
CHECKED BY:	RLT
SCALE:	1"=100'
DATE:	07/30/2008

FINAL PLAT SECTION TWO HARRIS WOODS LYING IN LAND LOTS 172 & 183 19th LAND DISTRICT HARRIS COUNTY, GEORGIA		 EMC ENGINEERING SERVICES, INC. ENVIRONMENTAL • MARINE • CIVIL • SURVEYING REGIONAL OFFICE 3575 MACON ROAD, SUITE 15 2334 LAKE PARK DRIVE COLUMBUS, GEORGIA 31907 ALBANY, GEORGIA 31707 (706) 565-5985 (800) 678-6133-TOLL FREE columbus@emc-eng.com www.emc-eng.com
--	--	---

SHEET
3
OF 5